



EQUIPMENT TRACKING

CONCEPT OF TELEMETRY | VINEYARD TEAM

COLE POWERS | CEO

ERIC JENSSEN | DIRECTOR OF SALES

AGENDA

Introductions

Telemetry Overview

Telemetry in Agriculture

Considerations of Equipment Tracking

Leveraging Equipment Management Software



EQUIPMENT MANAGEMENT SIMPLIFIED



INSTALL

our plug n' play data
loggers in < 2 minutes



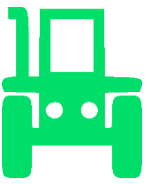
MONITOR

recommendations
through the farm
management software

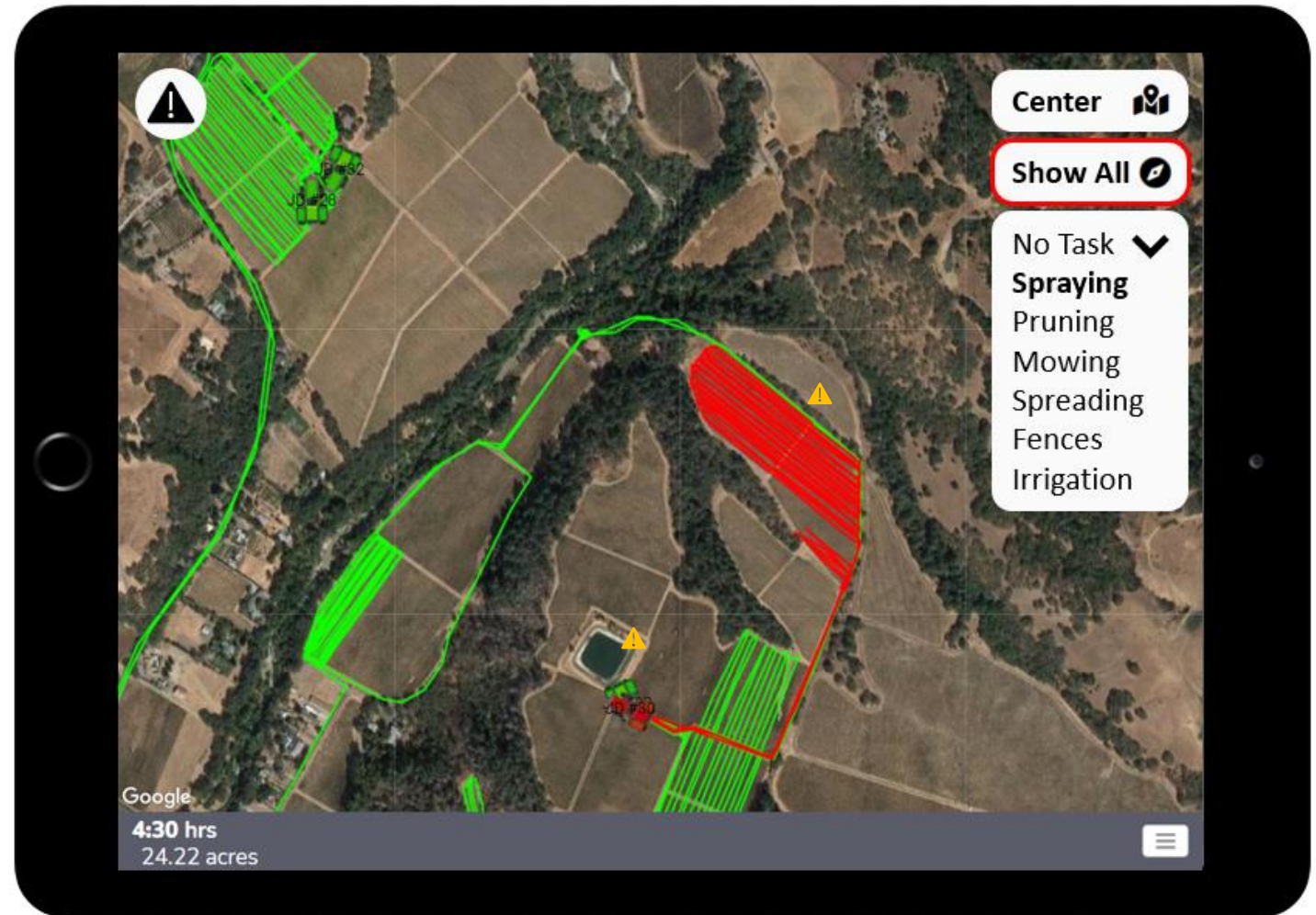


IMPROVE

through actionable
insights, saving time
and money



REAL TIME JOB MONITORING



TELEMATICS IN AGRICULTURE

OEM DEVICES

\$

Already Integrated

Complex interface

Theft, Maintenance, Efficiency

3rd Party Telematics

\$\$

Commoditized devices

Not for Agriculture

Theft, Maintenance

Equipment Management Software

\$\$\$

Holistic; Easiest to use

Can be costly

Theft, Maintenance, Efficiency

Key Considerations

- Main needs - what is my goal today? (theft, efficiency, remote management, maintenance management)
- Future proofing – what will my goal be in 5 years?
- Service levels – will my provider build a relationship and understand Ag?

LEVERAGING EQUIPMENT MANAGEMENT SOFTWARE

REAL TIME TRACKING



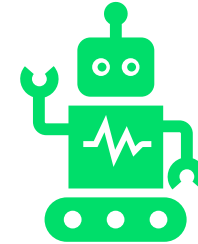
Track picking progress through harvest season for winemaker

DRIVE EFFICIENCY



Monitor and correct speed of application, operator best practices (Ac/Hr)

LAY FOUNDATIONS



Baseline operations to measure ROI of mechanization / automation



CONTACT US

WE WOULD LOVE TO
CONNECT WITH YOU

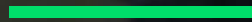
www.intelliculture.com

cpowers@intelliculture.com

[289-404-2653](tel:289-404-2653)



THANK YOU



INTELLICULTURE