

# Sudden Vine Collapse: Current Understanding of a Disease Complex

Erin Hardy<sup>1</sup>, Karina Elfar<sup>1</sup>, Marcelo Bustamante<sup>1</sup>, Masury Lynch<sup>1</sup>, Charlie Starr<sup>2</sup>, Mark Shimozaki<sup>2</sup>, Stephanie Bolton<sup>3</sup>, Neil McRoberts<sup>1</sup>, Maher Al Rwahni<sup>1</sup>, Larry Bettiga<sup>4</sup>, Mark Battany<sup>4</sup> and Akif Eskalen<sup>1</sup>

<sup>1</sup>Department of Plant Pathology, UC Davis. <sup>2</sup>Pest Control Advisor, Viticultural Services. <sup>3</sup>Lodi Winegrape Commission. <sup>4</sup>UCCE, Farm Advisor.

**Background:** Within the last 10 years, throughout the San Joaquin Delta, Central Valley, and Coastal Counties of California, grape growers have reported Sudden Vine Collapse (SVC), in which patches of vines within the vineyard, especially the ones on virus-sensitive rootstocks (Freedom, 039-16 and 101-14, among others), quickly die with no apparent cause (Fig. 1, Fig. 4A). In some cases, patches are so large that can be seen via satellite images on Google Earth, with levels of loss that have caused growers to remove entire vineyards.

**Symptoms:** Early in the season, stunted shoot growth or dead arms (Fig. 2A). Later, during the summer, entire vines start dying quickly in patches within the vineyard. In some cases, death is so fast that the leaves remain dry on the plant (Fig. 2B). Examined vines show a clear lack of feeder roots, with grayish-purple discolorations inside the bark of scaffold roots (Fig. 3A). At the graft union level, the scion portion often appear swollen (Fig. 3B), with a necrotic line on the phloem area. In many cases, rootstocks showed internal wedge-shaped cankers which were absent in the scion (Fig. 3C-D). Furthermore, mealybugs and common grapevine trunk diseases were observed in all affected vines (Fig. 3E, Fig. 4B).

**Synergy between grapevine viruses:** Vines infected with a single viral species usually show mild to strong symptoms, and the yield is significantly reduced but the vine will not collapse. However, mixed infections with grapevine leafroll viruses and vitiviruses can exacerbate symptoms and lead to vine decline (Golino, 1993; Rieger, 2019).

**Grapevine trunk diseases role:** Characteristic trunk diseases such as esca, dieback, canker and/or black foot could be present in affected vines with SVC, however no single fungal pathogen was consistently associated.

## Hypothesis

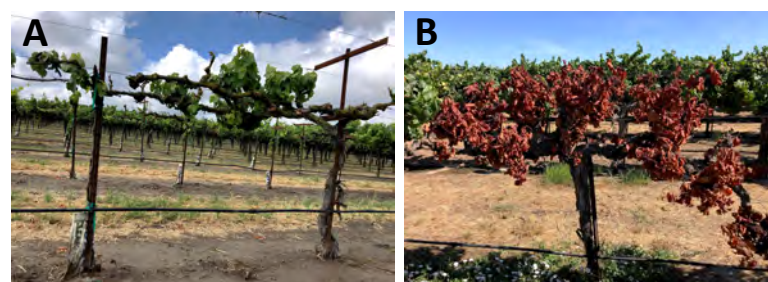
SVC is not caused by a single pathogen, but the result of a disease complex in which vines grafted on virus-sensitive rootstocks are predisposed to root stress due to co-infection by a leafroll virus (*Grapevine leafroll-associated virus 3*), vitiviruses (*Grapevine virus A*, *Grapevine virus F*), and possibly others. Consequently, infected vines rapidly die by an additional infestation of fungal pathogens associated with grapevine trunk diseases and black foot.

## Management

- Vector control.
- Remove collapsed vines from the vineyard.
- Transition to less susceptible rootstocks when replanting.



**Figure 1.** Sudden vine collapse in Paso Robles, CA (A). Patches of collapsed vines during summer 2019 in Lodi, CA (B).



**Figure 2.** Stunted shoot growth and dead arms early in the season (A). Quick death of vines during the summer (B).



**Figure 3.** Lack of feeder roots (A). Swelling and cracking on graft union bark (B). Scion cut with asymptomatic wood (C). Rootstock cut with cankered wood (D). Reproductive structures (pycnidia) of *Neofusicoccum parvum* on the bark, serving as inoculum source of the trunk diseases *Botryosphaeria* canker and dieback (E), Large colonies of mealybugs under the rootstock bark observed in all collapsed vines (F).



**Figure 4.** SVC on vines grafted on Freedom but not on 5C rootstocks.

## Free Access Literature

- Golino, D.A. 1993. Potential interactions between rootstocks and grapevine latent viruses. *American Journal of Enology and Viticulture* 44: 148-152.
- Rieger, T. 2019, October 7<sup>th</sup>. Sudden vine collapse may be associated with combination of virus pathogens. *Wine Business Daily News*. Retrieved from <https://www.winebusiness.com/news/?go=getArticle&datald=220522>.

Revised  
03/2020

<https://ucanr.edu/sites/eskalenlab>

University of California  
Eskalen Lab

UC DAVIS  
UNIVERSITY OF CALIFORNIA

LODI  
WINE  
COMMISSION

UC  
CE  
University of California  
Cooperative  
Extension